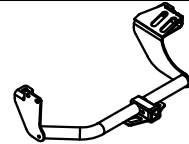




# Class III Receiver Hitch Part No. 69578C



Fits: **MITSUBISHI OUTLANDER**

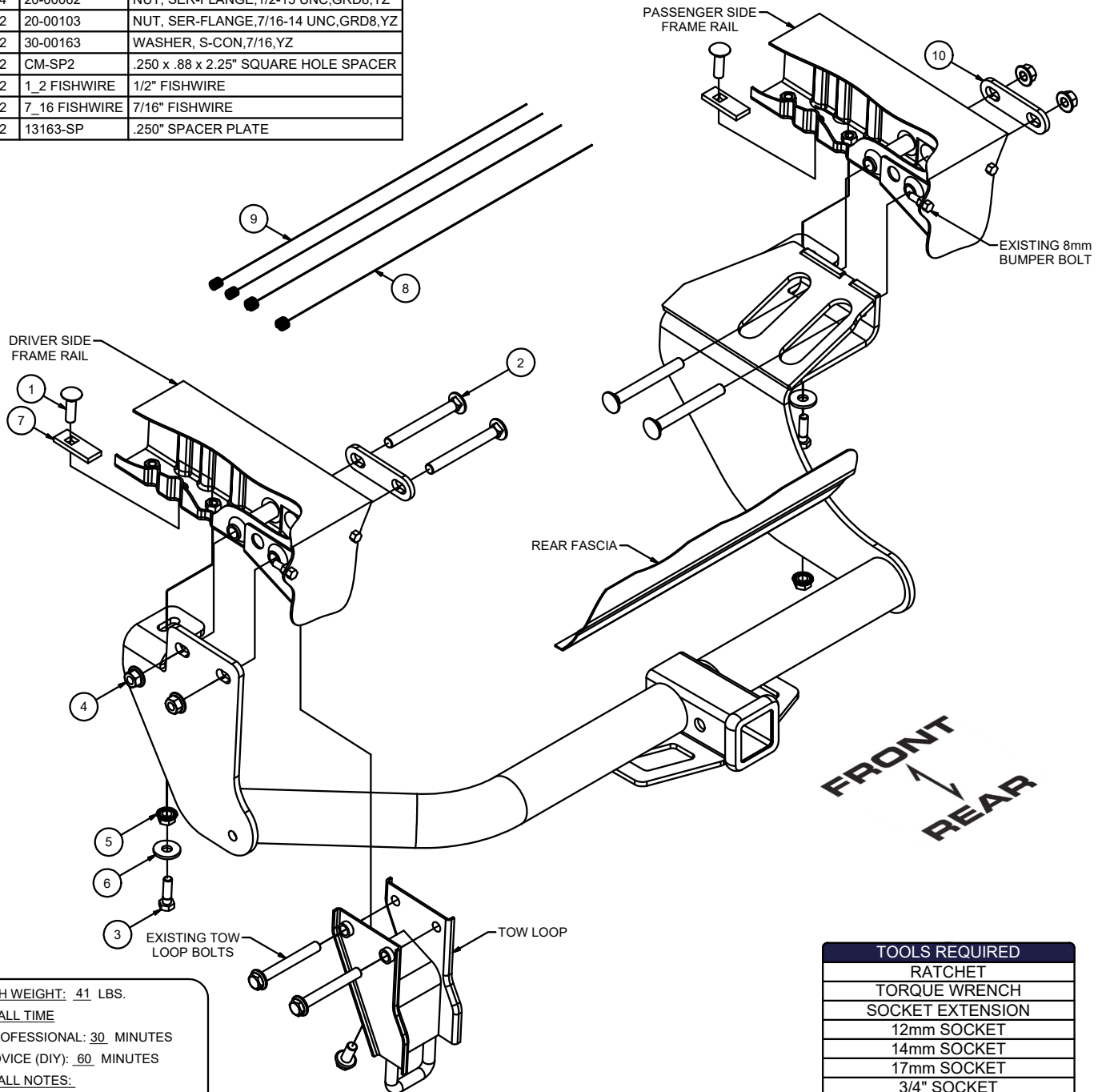


GROSS LOAD CAPACITY WHEN USED AS A WEIGHT CARRYING HITCH: 4,000 LBS. TRAILER WEIGHT & 600 LBS. TONGUE WEIGHT.  
GROSS LOAD CAPACITY WHEN USED AS A WEIGHT DISTRIBUTION HITCH: 4,000 LBS. TRAILER WEIGHT & 600 LBS. TONGUE WEIGHT



**WARNING: \*\*\* DO NOT EXCEED VEHICLE MANUFACTURER'S RECOMMENDED TOWING CAPACITY. \*\*\***

Parts List			
ITEM	QTY	PART NUMBER	DESCRIPTION
1	2	10-10282	BOLT, CAR, 7/16-14 UNC, 1-1/2, GRD8, YZ
2	4	10-10297	BOLT, CAR, 1/2-13 UNC, 4-1/2, GRD8, YZ
3	2	10-10298	HHCS, M10x1.25, 35, CL10.9, YZ
4	4	20-00062	NUT, SER-FLANGE, 1/2-13 UNC, GRD8, YZ
5	2	20-00103	NUT, SER-FLANGE, 7/16-14 UNC, GRD8, YZ
6	2	30-00163	WASHER, S-CON, 7/16, YZ
7	2	CM-SP2	.250 x .88 x 2.25" SQUARE HOLE SPACER
8	2	1_2 FISHWIRE	1/2" FISHWIRE
9	2	7_16 FISHWIRE	7/16" FISHWIRE
10	2	13163-SP	.250" SPACER PLATE



**HITCH WEIGHT:** 41 LBS.

**INSTALL TIME**

PROFESSIONAL: 30 MINUTES

NOVICE (DIY): 60 MINUTES

**INSTALL NOTES:**

- NO DRILLING
- FISHWIRE HARDWARE
- REMOVE TOW LOOP

**TOOLS REQUIRED**

- RATCHET
- TORQUE WRENCH
- SOCKET EXTENSION
- 12mm SOCKET
- 14mm SOCKET
- 17mm SOCKET
- 3/4" SOCKET
- SCREWDRIVER
- SAFETY GLASSES

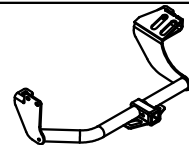
**PERIODICALLY CHECK THIS RECEIVER HITCH TO ENSURE THAT ALL FASTENERS ARE TIGHT AND THAT ALL STRUCTURAL COMPONENTS ARE SOUND.**

Keystone Automotive Operations Inc., warrants this product to be free of defects in material and/or workmanship at the time of retail purchase by the original purchaser. If the product is found to be defective, Keystone Automotive Operations Inc., may repair or replace the product, at their option, when the product is returned, prepaid, with proof of purchase. Alteration to, misuse of, or improper installation of this product voids the warranty. Keystone Automotive Operations Inc.'s liability is limited to repair or replacement of products found to be defective, and specifically excludes liability for incidental or consequential loss or damage. This product complies with safety specifications and requirements for connecting devices and towing systems of the state of New York, V.E.S.C. Regulation V-5 and SAE J684. For Technical & Warranty Support : 1-877-544-4449 Fax- 1-855-242-8922 [www.huskytow.com](http://www.huskytow.com)

07302019



## Class III Receiver Hitch Part No. 69578C



Fits: **MITSUBISHI OUTLANDER**



GROSS LOAD CAPACITY WHEN USED AS A WEIGHT CARRYING HITCH: 4,000 LBS. TRAILER WEIGHT & 600 LBS. TONGUE WEIGHT.  
GROSS LOAD CAPACITY WHEN USED AS A WEIGHT DISTRIBUTION HITCH: 4,000 LBS. TRAILER WEIGHT & 600 LBS. TONGUE WEIGHT

**WARNING: \*\*\* DO NOT EXCEED VEHICLE MANUFACTURER'S RECOMMENDED TOWING CAPACITY. \*\*\***

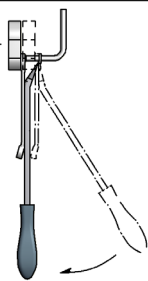


### RUBBER ISOLATOR REMOVAL DIAGRAM

This technique can be used if an Exhaust Hanger Removal Pliers is not available.

Using a 5/8" open end wrench, slide the wrench up to the rubber isolator, cradling the hanger rod as shown. Next place the flat edge of a pry bar between the wrench and the hanger stop or hanger rod. Then simply rotate the pry bar toward the wrench to remove the rubber isolator.

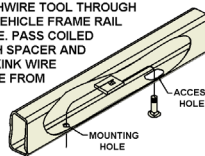
Note: Using a spray lubricant or soapy water on the hanger rod and the rubber isolator helps removal.



### FISHWIRE TECHNIQUE

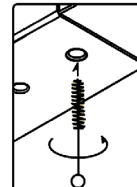
INSERT COILED END OF FISHWIRE TOOL THROUGH HITCH MOUNTING HOLE IN VEHICLE FRAME RAIL AND OUT THE ACCESS HOLE. PASS COILED END OF FISHWIRE THROUGH SPACER AND THREAD BOLT INTO COIL. KINK WIRE TO KEEP SPACER SEPARATE FROM BOLT AS SHOWN. PULL FISHWIRE, SPACER, AND BOLT THROUGH FRAME AND OUT MOUNTING HOLE. USE FISHWIRE TO GUIDE HITCH DURING MOUNTING AND PREVENT LOSS OF BOLT / SPACER INSIDE FRAME RAIL.

\*\*\*NOTE: SOME VEHICLES MAY FISHWIRE THROUGH END OF FRAME\*\*

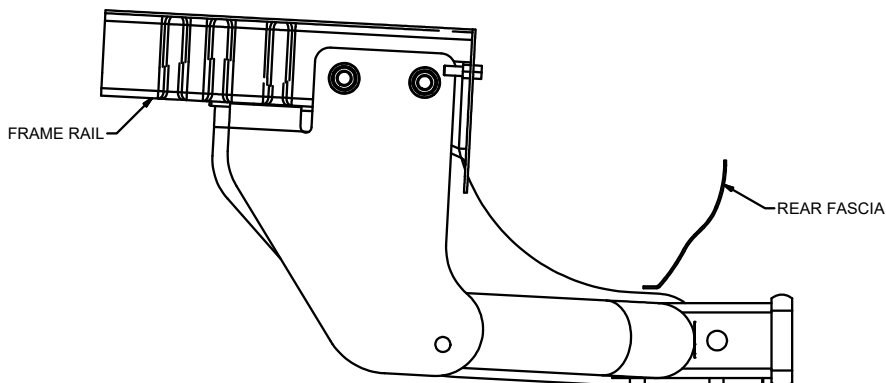
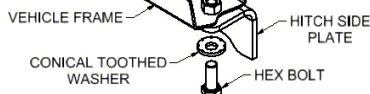


### WELDNUT CLEANING

To remove debris from weldnuts in frame, spray lubricant or compressed air into hole. For heavy debris, use a small wire brush. (Be careful not to damage threads).



### CONICAL TOOTHED WASHER ORIENTATION DIAGRAM



HITCH SHOWN IN PROPER POSITION

## INSTALLATION STEPS

1. Remove (3) bolts and tow loop from the driver side frame rail. Return bolts and tow loop to owner.
2. Lower exhaust by removing (3) rubber isolators. Support exhaust as needed to prevent damage.
3. Raise the hitch into position and align the bottom tabs of the hitch with the center weldnuts in the frame rails. Loosely secure the hitch to the bottom of the frame rails with M10-1.25 x 35mm hex bolts and 7/16" conical toothed washers. **Note:** On the end of the passenger side frame rail you may need to back out the inner bumper bolt to allow the hitch to be fully raised. If weldnuts do not exist fishwire 7/16" carriage bolts and spacers into the frame rails as shown.
4. On the driver side, insert the 1/2-13 x 4-1/2" carriage bolts and 13163-SP spacer through the frame rail and out the driver side plate, secure using 1/2-13 flange nuts. **Note:** You may need to lower or pull down on the spare tire to allow the carriage bolts to slide through the frame rail.
5. On the passenger side, fishwire the 1/2-13 x 4-1/2" carriage bolts through the passenger side plate and out the frame rail, secure using the 13163-SP spacer and 1/2-13 flange nuts. **Note:** If the inner bumper bolt was backed out in Step 3, tighten and torque to 25 ft-lbs.
6. Torque all 10mm hardware to 48 ft-lbs.  
Torque all 1/2" hardware to 110 ft-lbs.  
Torque all 7/16" hardware to 59 ft-lbs.
7. Raise exhaust back into position.

**PERIODICALLY CHECK THIS RECEIVER HITCH TO ENSURE THAT ALL FASTENERS ARE TIGHT AND THAT ALL STRUCTURAL COMPONENTS ARE SOUND.**

Keystone Automotive Operations Inc., warrants this product to be free of defects in material and/or workmanship at the time of retail purchase by the original purchaser. If the product is found to be defective, Keystone Automotive Operations Inc., may repair or replace the product, at their option, when the product is returned, prepaid, with proof of purchase. Alteration to, misuse of, or improper installation of this product voids the warranty. Keystone Automotive Operations Inc.'s liability is limited to repair or replacement of products found to be defective, and specifically excludes liability for incidental or consequential loss or damage. This product complies with safety specifications and requirements for connecting devices and towing systems of the state of New York, V.E.S.C. Regulation V-5 and SAE J684.

07302019